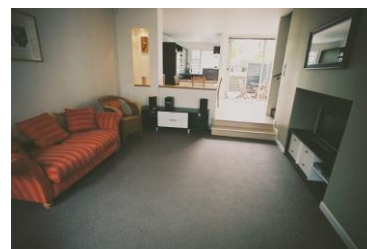
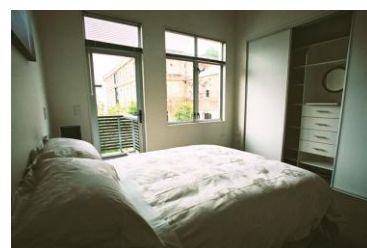


- **3 BEDROOM TOWNHOUSE**
- **BEAUMONT QUARTER OFF VICTORIA PARK CBD**
- **FANTASTIC FACILITIES WITHIN COMPLEX**
- **INTERNET AVAILABLE**

INDICATIVE RENTAL \$1,260 PER WEEK

PROPERTY TYPE	NOT SPECIFIED
STREET	FISHER POINT DRIVE
SUBURB	AUCKLAND CITY CENTRE
DOUBLE BEDROOMS	2
SINGLE BEDROOMS	1
DINING ROOM	OPEN-PLAN TO KITCHEN
LOUNGE DETAILS	OPEN-PLAN TO DINING
LAUNDRY DETAILS	ALCOVE IN BATHROOM
MISCELLANEOUS ROOMS	
BATHROOMS	1
SEPARATE SHOWERS	0
SEPARATE TOILETS	0
HEATING	SPACE HEATERS
KITCHEN DETAILS	OPEN PLAN
FURNISHINGS	FULLY FURNISHED
APPLIANCES	FULLY FURNISHED WITH ALL WHITEWARE
PETS	PERMITTED
GARAGE	SINGLE
CARPORTS	1
OFF STREET PARKING	0
SUN	GOOD SUN
VIEWS	QUARTYARD AND GRASSED COMMON AREA
AVAILABLE	1 JAN 2009
TERM AVAILABLE	EITHER PERIODIC OR FIXED TERM



Fisher Point Drive within the Beaumont Quarter offers a home for a family. Its a good size Townhouse located by Victoria Park, and a large New World. The complex has excellent facilities such as a Indoor Pool,Gym.

